

Accelerated Technology Laboratories, Inc.

# 2D Bar Coding

## Maximize information storage with 2D Barcodes

### Introducing ATL's 2D Bar-Coding Starter Package

As scientists have the need to store more and more data about samples on the label for specific studies such as stability or for bio banking, the only viable solution is switching to a smaller label with a compressed 2D format. The "2D" stands for "two dimensional" because the codes have the ability to store information on both the horizontal and vertical axis. Traditional 1D barcodes store information horizontally. The more information included, the longer the barcode becomes. 2D barcodes have an advantage because they can store data vertically and horizontally, increasing in either direction depending on the amount of information. The reason this is important is because if a 1D barcode becomes too long, it can't be easily scanned. 2D barcodes can store more information in a smaller space, while still maintaining easy readability, which is especially important when dealing with small volume samples and labels.



### 2D Bar-Coding Components

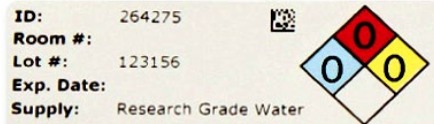
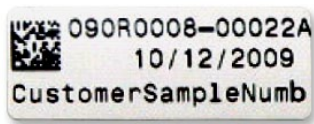
ATL's 2D Barcode Starter Package can be integrated with ATL's LIMS products and provides everything that you need to get started in printing 2D barcodes on a variety of labels and sizes, including 1"x3", 3/8" dot, and 3/8"x1" sizes. The starter package contains: one label printer, one ribbon, one USB cable, one roll of starter labels and one 2D scanner. Also included are free installation, configuration, and training when purchased with ATL's Laboratory Information Management System.

### Installation and Training

ATL engineers will provide on-site expert installation, configuration and training of the barcode label printer and scanner/s. For more detailed information on ATL's positive ID offerings, please contact an ATL Sales Representative.

There are some great benefits to using a 2D barcode. For example, the codes can be integrated with more than just a sample label resulting in the combination of a variety of labels from asset tags used with laboratory inventory software, to chemical inventory labels, to long term freezer storage labels. Also the 2D barcode can be read by numerous scanning devices including many smart phones that can scan and interpret the barcodes.

Here are some sample labels, both standard 1"x 3" and specialty labels 3/8" dot and 3/8"x1" size, for freezer storage and chemical inventory. ATL automation specialists will work with you to find the appropriate labels to satisfy your needs.



For more information about ATL's bar coding solutions, please contact an ATL sales representative at 1-800-565-LIMS (5467) or e-mail us at [info@atlab.com](mailto:info@atlab.com) or visit [www.atlab.com](http://www.atlab.com).

